

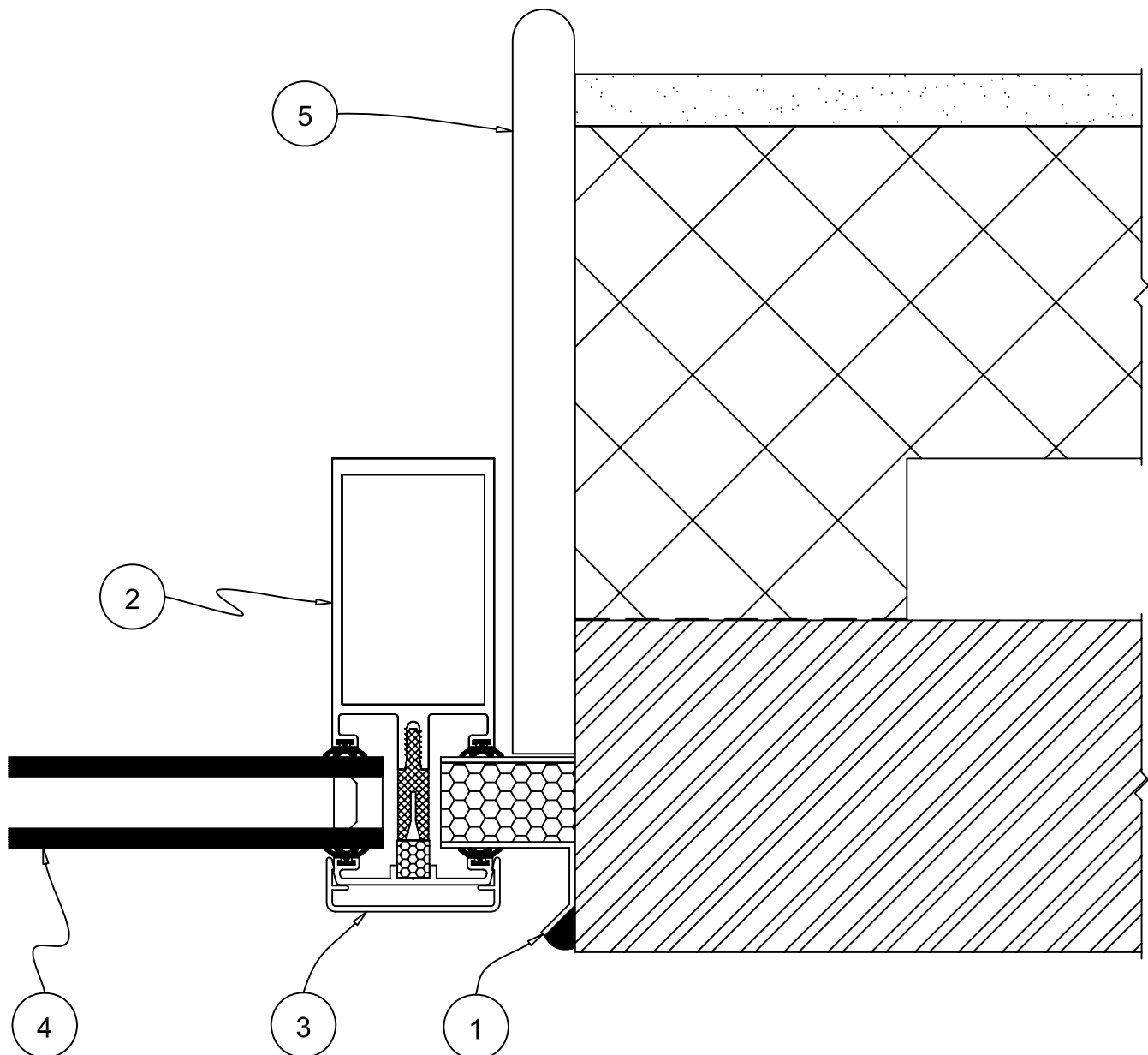
Drg No. BD-5120 < use this ref for downloading from our website

Title : Skyline Box Glazing details
Vertical end detail 3

Scale:
1:2

download from www.patent-glazing.com/pdf/box --- for .pdf format
download from www.patent-glazing.com/cad/box --- for .dwg format

1. 16swg aluminium double skin insulated end flashing with silicone seal to wall ~ by SPG Co Ltd
2. SPG7 glazing bar
3. PC1 & PC2 caps
4. 28mm thick infill
5. Internal finishes ~ not by SPG Co Ltd



0 10 20 30 40 50